

AT-COMP-02

INSTALLATION INSTRUCTIONS

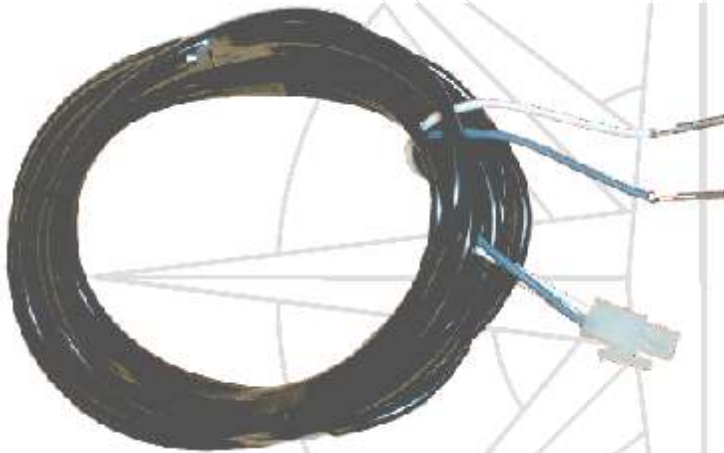


IN-DASH KIT + POD



IN-DASH (FLUSH MOUNT) KIT

Check to see that you have all of the components shown below.



1 PC. AP-HRN-236
TEMP MODULE TO DISPLAY



1 PC. TEMPERATURE MODULE



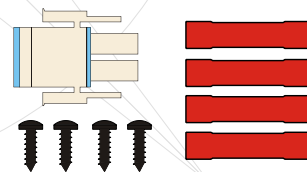
1 PC. COMPASS SENSOR



1 PC. AP-HRN-235
COMPASS MODULE TO DISPLAY



1 PC. AP-HRN-234
POWER TO DISPLAY



4 PCS. #4 X 1/4" PANHEAD
4 PCS. RED BUTTS
1 PC. 2-PIN (TEMP) PLUG

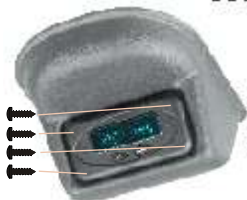


American Technology
COMPONENTS, INCORPORATED

Look at American Technology: See the Difference
2905 LaVanture Place Elkhart, IN 46514
(219)262-1258 FAX (219)264-9138

AT-COMP-02 INSTALLATION INSTRUCTIONS

Install all the components into the POD and plug in all the harness's. The Compass Module must be installed with the arrow facing forward. The compass can only be as accurate as the mounting position allows.

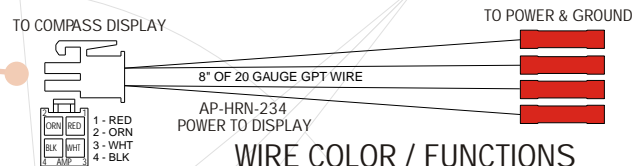
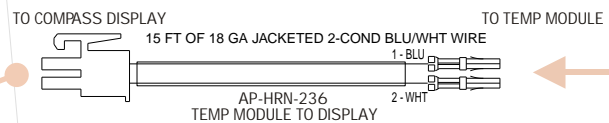
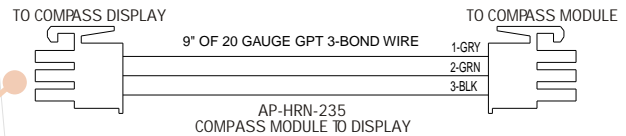


THE COMPASS MODULE ARROW MUST BE ORIENTED TOWARD THE FRONT OF THE VEHICLE. THE ACCURACY OF THE COMPASS DEPENDS ON THE ORIENTATION OF THE COMPASS MODULE.

TEMPERATURE MODULE



AFTER RUNNING WIRE TO TEMP MODULE INSERT TERMINATED WIRES INTO 2-PIN PLUG AND PLUG INTO MODULE



WIRE COLOR / FUNCTIONS

BLACK = GROUND
RED = BATTERY HOT
ORANGE = IGNITION HOT
WHITE = HEADLIGHT INPUT

*NOTE: WHITE WIRE DIMS THE DISPLAY BY 50% AND IS NOT NECESSARY FOR OPERATION

Note: When installing the pod be sure that you have a solid substrate to screw into the ceiling, and the screws that you select are the correct type/length (not long enough to puncture the roof of the vehicle) If you cannot determine the substrate or the screw length, you should remove the windshield molding and pull down the front portion of the headliner to inspect the mounting location for clearance.



American Technology
COMPONENTS, INCORPORATED

Look at American Technology: See the Difference
2905 LaVanture Place Elkhart, IN 46514
(219)262-1258 FAX (219)264-9138